

 VIPERA



VIPERA

2024 - Q1
INFOKIT

WHO IS VIPERA

Paving the way to future technologies

About ViperaLLC

What We Offer Crypto

FogHashing BC10 BC40 BC20

VIPERA Mining Turnkey Solutions

Smart Health

Digital Signage

Holographic

PC Gaming

AI

Computing

Mining Colocation



ABOUT VIPERA

AN INTRODUCTION

What started out as a passion for groundbreaking technological innovation quickly became a thriving ecosystem of high-end technological and electronic solutions adapted and curated by a team of dedicated specialists leading the way in all things digital.



VIPERA

TOMORROWS TECHNOLOGY TODAY

Vipera is a premier source for selective, highly sought-after electronics and cutting-edge technology solutions catering to the digital advertising, cryptocurrency, A.I. processing, corporate I.T. and PC gaming industries.

PC GAMING



DIGITAL SIGNAGE



SMART HEALTH



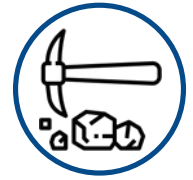
AI COMPUTING



CRYPTOCURRENCY



MINING COLOCATION





C R Y P T O C U R R E N C Y

“I do think Bitcoin is the first [encrypted money] that has the potential to do something like change the world.”

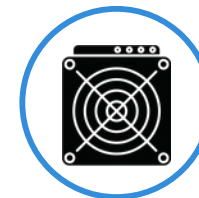
—Peter Thiel, co-founder of PayPal



Be the Change. Be a Crypto Pioneer.

SOLUTIONS 2023+

As an authorized reseller of Bitmain, Innosilicon, Canaan and MicroBt we are committed to bringing you state-of-the-art, brand new cryptocurrency mining products that are backed by our extended 2-year and 3-year warranty and 24/7 technical support. These systems are dynamic, purpose-built applications that facilitate incredibly complex computing necessary to create and maintain a cryptocurrency's transaction network. Our ASIC models for Bitcoin and Altcoins such as Ethereum, are known for their power consumption efficiency and return on investment.





Endure the Cycle. Protect your Investment.

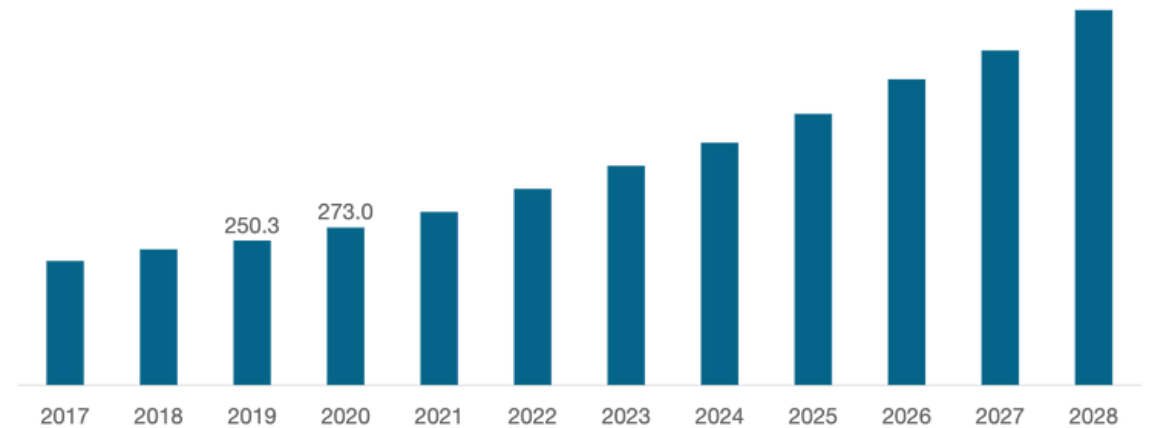
O U R D I S T I N C T A D V A N T A G E

CYCLESAFE™ & CYCLESAFE™ Plus are exclusive warranty plans designed for keeping our customer's ASIC miners risk-free with an extended warranty of 2 or 3 years from date of delivery.

The concept is to ensure every customer has confidence going forward with their substantial investments, and that they remain operational for the majority of their expected lifespans.

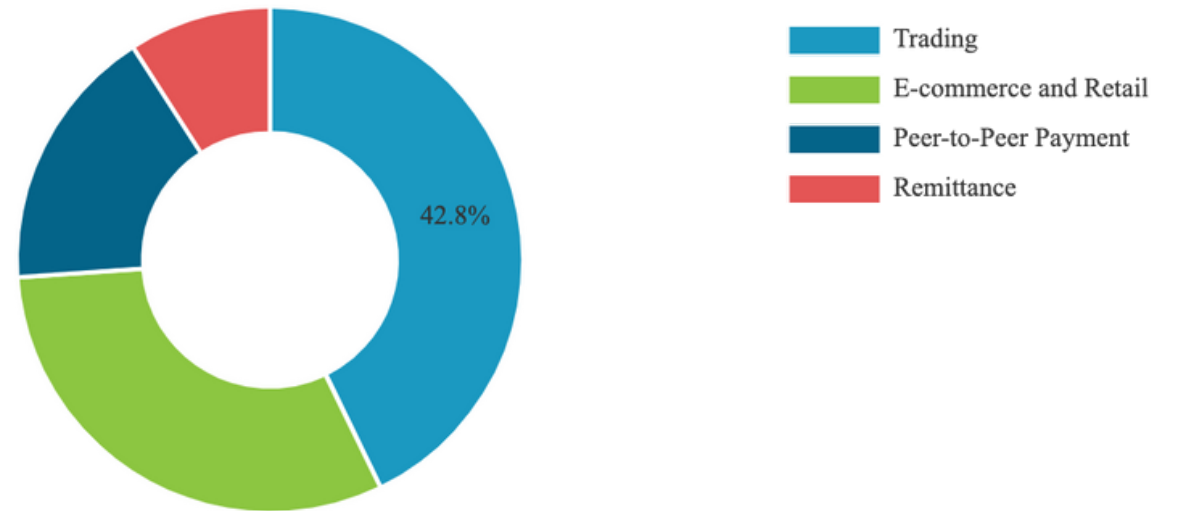
The global cryptocurrency market is projected to grow from \$910.3 million in 2021 to \$1,902.5 million in 2028 at a CAGR of 11.1% in forecast period, 2021-2028

North America Cryptocurrency Market, 2017-2028 (USD Million)



Trading captured the largest market share. The segment focused on crypto solution that are used for trading.

Global Cryptocurrency Market Share, By End-Use, 2020



www.fortunebusinessinsights.com

The market research provides an in-depth analysis of the market. It focus on key aspects such as leading companies, product industry and leading mining software and hardware solution.

ATTRIBUTE	DETAILS
Study Period	2017 – 2028
Base Year	2020
Estimated Year	2021
Forecast Period	2021 – 2028
Historical Period	2017 – 2019
Unit	Value (USD million)
Segmentation	By Component; Type; End-Use; and Region
By Component	<ul style="list-style-type: none"> • Hardware <ul style="list-style-type: none"> ◦ FPGA ◦ ASIC ◦ GPU ◦ Others (Paper Wallet, Web Wallet, Etc.) • Software <ul style="list-style-type: none"> ◦ Mining Software ◦ Exchanges Software ◦ Wallet ◦ Payment ◦ Others (Vaults, Encryption, Etc.)
By Type	<ul style="list-style-type: none"> • Bitcoin • Ether • Litecoin • Ripple • Ether Classic • Others (Dogecoin, Moneor, Dash, Etc.)



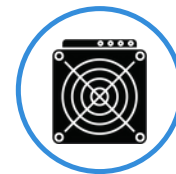
ASIC
Mining



ASIC Mining Solutions

ASIC miners are at the forefront of the crypto mining industry and are utilized by independent miners and farming operations because of their ability to provide higher hash rates vs energy consumptions and therefore produce more monetary value and reach ROI at a quicker rate than their alternatives.

Our relationships help us source some of the most highly sought - after miners in the market .



Scaling Solution



For professional small to mid-scale mining operations.

A more efficient and economical solution that allows you to overclock and extract the most hashing performance out of your ASICS.

Lian Li Water Cooling Radiator for ASICs

The simplest and most convenient water-cooled overclocking system for mining machines and can also use mineral heat to heat the house.
ASIC water cooling row HOME mining Liquid cooling system
Support: Antminer, Whatsminer, Avalon, Ipollo, Innosilicon



3080
Watt



63.5
TH/s

BITMAIN ANTMINER K7

Model AntminerK7 (63.5Th) from Bitmain mining Eaglesongalgorithm (Nervos) with a maximum hashrateof 63.5Th/s for a power consumption of 3080W.

2-year extended CYCLESAFE™replacement or repair warranty included (6 months manufacturer, 18 months reseller).

3010
Watt



140
TH/s

BITMAIN ANTMINER S19XP

Bitmain are one of the top 5 ASIC manufacturers in the world and for good reason. Their outstanding hardware provides some of the highest hashratein the entire industry. The S19xp is no different, setting the highest benchmark for ASIC mining to date.

1,845
MH/s



630
Watt

JasminerX16-Q Quiet (ETC)

The World's first memory computing integrated high-throughput processor.
Quiet, compact 3U rack-mountable format and rugged design.

3154
Watt



166
TH/s

BITMAIN ANTMINER KA3

Bitmain AntminerKA3 (166Th) mining the lucrative Kadena(Blake2s) algorithm with a maximum hashrate of 166Th/s for a power consumption of 3154W.

Now with Viper's CYCLESafe™ PLUS 3-year extended warranty included.
As with all mining hardware, we absorb all import duties (EU, NA, GCC only).

150
TH/s



3230
Watt

Canaan Avalon A1466

Model AntminerK7 Hashrate: 150TH/s (with a tolerance range of -5% to +5%) and Power Consumption: 3230W (with a tolerance range of -10% to +10%)

Warranty: 1 Year

9.4
TH/s



3188
Watt

Bitmain KS3 9.4TH/s 3188W

The Bitmain Antminer KS3 (9.4Th) is a powerful mining device manufactured by Bitmain. Tentatively to be released in August 2023, this mining rig is designed to provide efficient cryptocurrency mining capabilities.

3400
Watt

6
TH/s



IceRiver KS3M 6TH/s 3400W

The KAS mining rig boasts a hashrate of 6TH/s with a 10% variability and wall power consumption of 3400W/h. Its compact design measures 370×195×290mm, making it an efficient choice for cryptocurrency miners.

600
Watt

1
TH/s



IceRiver KS1 1TH/s 600W (KAS)

With a hashrate of 1TH/s and a power consumption of 600W/h (with a 10% margin), the KAS mining rig is optimized for the kHeavyHash algorithm. Its compact design, measuring 490×300×400mm with packaging, offers efficiency for cryptocurrency miners

70
TH/s



iBeLink BM-K3

mines Kadena with a high hash rate of 70Th/s (+-5%) for a power consumption of 3300W.

iBeLink BM3, released in 2022, is one of the most powerful Kadena miners of the year.

Blackminer L1

Model BlackminerL1 Mining Script Algorithm with a maximum hash rate of 4.3Gh/s for a power consumption of 3450W. 1 year extended Viper warranty included.

25
TH/s



iBeLink BM-N3

The efficient N3 has a 25Th/s hash rate performance coupled with a 3300W power consumption.

The BM-N3 is covered by a 6-month manufacturer warranty.



4,900
MH/s

190
TH/s



Bitmain Antminer T21

- ✓ Algorithm | Cryptocurrency: SHA256 | BTC/BCH/BSV
- ✓ Hashrate: 190TH/s
- ✓ Power on wall @25°C: 3610W
- ✓ Power efficiency on wall @25°C: 19.0J/TH
- ✓ Power supply AC Input voltage: 380~415V
- ✓ Power supply AC Input Frequency Range: 50~60Hz
- ✓ Power supply AC Input current: 12 Amp
- ✓ Networking connection mode: RJ45 Ethernet 10/100M
- ✓ Miner Size (LengthWidthHeight, w/o package): 400195290mm
- ✓ Warranty: 1-year manufacturer replacement or repair

MicroBT WhatsMiner M60 / M60S 186TH/s 3182W

- ✓ Model: Microbt WhatsMiner M60 / M60S
- ✓ Algorithm: SHA-256
- ✓ Impressive Hashrate: 172 TH/s – 186TH/s
- ✓ Efficient Power Consumption: Only 19.9W – 18.5W per terahash
- ✓ Ideal for Bitcoin Mining: Designed to handle the demands of Bitcoin's SHA-256 algorithm.
- ✓ Next Gen Power Draw: Minimizes energy costs, offering a cost-effective mining solution.
- ✓ Reliable Performance: The M60 series is an overall powerhouse performer, optimizing your SHA-256 mining operations while preparing you for the 2024 halving.



172T
H/s



335
TH/s

Bitmain Antminer S21 Hydro

- ✓ Model: Antminer S21 Hyd (335Th)
- ✓ Size: 410 x 170 x 209mm
- ✓ Noise Level: 50db
- ✓ Cooling: Hydrocooling
- ✓ Power Consumption: 5360W
- ✓ Interface: Ethernet
- ✓ Operating Temperature: 5 – 45°C
- ✓ Humidity Range: 5 – 95%
- ✓ Requires 3-phase 380v power input



Bitmain Antbox N5 Mobile Mining Container Outdoor V2

Large exhausts with inlet filter pads and excellent heat dissipation
Improved features over previous generation include security camera, augmented heat isolation, facial recognition terminal, lightweight materials and more

The N5 V2 model can accommodate 207 S19 model ASICs. It is exclusive to the S19/S17/T19 “double-stack” format of ASICs.



FogHashing C1 Immersion Cooling Kit

For professional small to mid-scale mining operations.
A more efficient and economical solution that allows you to overclock and extract the most hashing performance out of your ASICs.
2-year manufacturer parts warranty.

FogHashing BC10 BC40 BC20 Basic & Pro Immersion Cooling Container

- BC40 Basic-Water Cooling Tower
- BC20 Basic-Water Cooling Tower
- BC40 Pro-Water Cooling Tower
- BC20 Pro-DryCooler
- BC40 Basic-DryCooler
- BC20 Basic-DryCooler
- BC40 Pro-DryCooler
- BC40 coolant 13,000L
- BC20 coolant 6,000L
- BC20 Pro-Water Cooling Tower



VIPERA Revolutionizes Mining with Turnkey Solutions: All-in-One Mining Farm Setup



Full Consultation Services

Our experienced team of experts will work closely with you to understand your specific requirements and objectives. We don't believe in one-size-fits-all solutions. Instead, we tailor our solutions to your needs, ensuring the optimal setup for your mining farm. Whether you're an experienced miner looking to expand or a newcomer to the industry, we provide personalized guidance to ensure your success.



Dealing with Local Utility Companies

Navigating the complexities of local utility companies can be daunting, especially when negotiating favorable power agreements. VIPERA takes care of this process on your behalf, leveraging our industry connections and expertise to secure reliable access to electricity at competitive rates. We analyze your energy consumption needs and recommend the most cost-effective solutions, whether it's traditional grid power or renewable energy sources.



Engineering and Design

Our top-notch engineering and design team specializes in creating mining farm infrastructures that maximize efficiency and minimize operational costs. We meticulously plan the layout, cooling systems, and electrical configurations to ensure optimal performance. Our focus on efficiency extends to the design of immersion systems, where we aim to significantly reduce energy consumption while maintaining optimal mining conditions.



Logistics Management

VIPERA handles the logistics, from sourcing mining equipment to transportation and delivery to your chosen location. We ensure that your mining farm components arrive safely and on time. Our global network of suppliers ensures that you receive high-quality mining hardware at competitive prices. Our logistics experts manage the entire supply chain, so you can rest assured that your equipment will be ready for deployment as soon as it arrives.



Technical Team Deployment

Our skilled technical teams are deployed to set up your mining farm on-site. They ensure that all components are installed correctly and optimized for peak performance. We conduct rigorous testing to identify and address any potential issues before they impact your mining operations. Our commitment to quality extends to ongoing maintenance and support, ensuring that your mining farm continues to operate efficiently and reliably.



Municipality Permitting

Navigating local regulations and permits can be a headache for miners. VIPERA takes care of all the necessary permitting and compliance requirements, ensuring a seamless setup process. We have extensive experience in dealing with local authorities and municipalities, and we ensure that your mining farm complies with all relevant regulations, zoning codes, and environmental requirements.

S M A R T H E A L T H

INNOVATIVE SOLUTIONS FOR
HEALTH CARE PROVIDERS AND
BUSINESSES



SOLUTIONS TO HELP BUSINESSES HANDLE A NEW REALITY

We have researched, designed and tested signage products and partnered with leading manufacturers across the globe to bring you a suite of virus prevention technology,

Our dedication to providing digital information tools and materials that make our hotels, venues, shops, eateries, hospitals, malls, transit hubs, schools and communities safer and prosperous is tantamount.

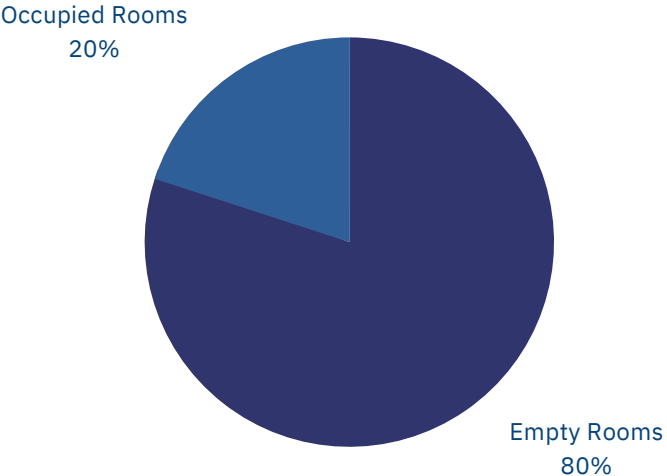
Furthermore, we have put emphasis on speed of delivery and relaying utmost transparency in costs, no matter if an order is small or large. We see an opportunity to use this challenging time to nurture lasting relationships with our clients.



BUSINESSES AFFECTED BY GLOBAL PANDEMIC

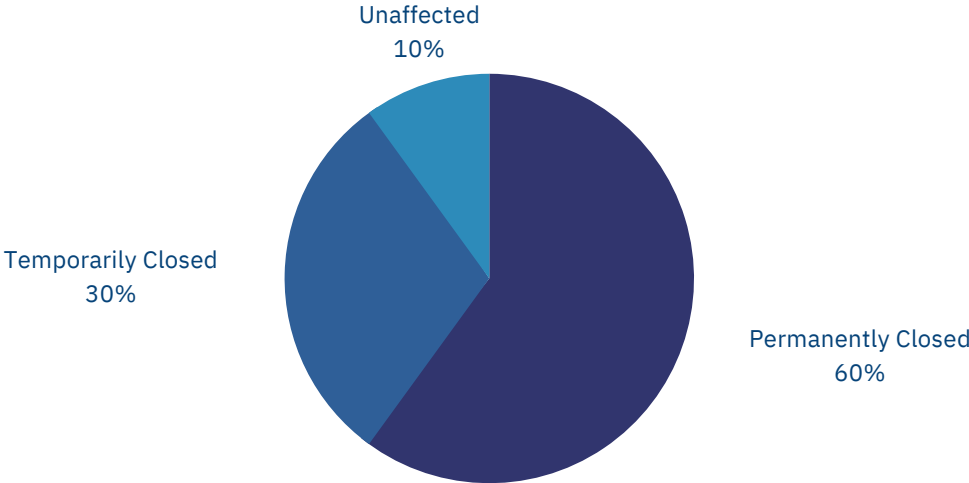
Hotels

80% of hotel rooms were left vacant due to the pandemic



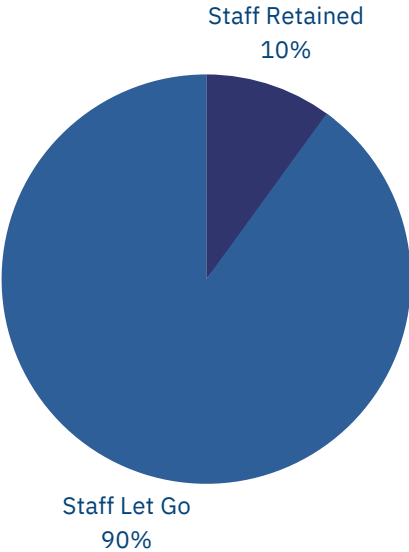
Small Businesses

30% of small businesses closed permanently due to the pandemic



Airlines

90% of airline staff were let go due to the pandemic



Viperatron VaxiPass

Since the outbreak of the new coronavirus in 2019, body temperature detection has become a necessary means to identify and prevent viral infections. Handheld infrared thermometers require short distances between humans, slow speeds, no record verification and require a large number of staff.



Using the face recognition temperature measurement access control, this device can save labor costs, reduce needless contact, and avoid cross-infection. It replaces fingerprint attendance check-ins. Allowing a smooth transition back to work and business.



Introducing



Viperatron VaxiPass

A compact and modifiable detection solution adapted for hospitals, restaurants, offices, residential buildings, retail and more. Comes equipped with standard robust facial detection solution for optional controlled access to doors, gates and turnstiles.

BUSINESS SOLUTIONS

Using Innovative Technology to Bring Businesses Back



Vaccine Certificate reader and identifier. Works with Vaccine Certificates from all over the world. Touch-screen kiosk automatically reads body temperature in seconds, with optional facial recognition and optional sanitizer dispenser solution.

Viperatron Vaxipass kiosk range is designed to provide an effortless safe environment for your employees, customers and visitors.





RONDO DISINFECTANT FOGGER

Hand-held rechargeable spray gun built to safely disinfect and sanitize surfaces at a distance with atomization technology.



VIPERATRON VAXIPASS

The world's first dynamic thermometer kiosk, vaccine certificate authenticator, QR code reader designed to provide an effortless safe environment for your employees, customers and visitors.

D I G I T A L S I G N A G E

PIONEERING A NEW
ADVERTISING FUTURE





INNOVATION BUILT TO IMPRESS

Our select range of LG commercial displays are especially sought-after by customers looking to make a lasting impact with their brand and message.

LG's newest display lineup will completely transform your business and allow you to experience a level of creativity through unmatched innovation.

LG has revolutionized the way you can carry out your message, and Vipera has chosen them exclusively as for all OLED and signage projects.

VIPERA IS AN AUTHORIZED RESELLER OF LG BUSINESS SOLUTIONS,
CURRENTLY THE EXCLUSIVE MANUFACTURER OF TOLED TECHNOLOGY.

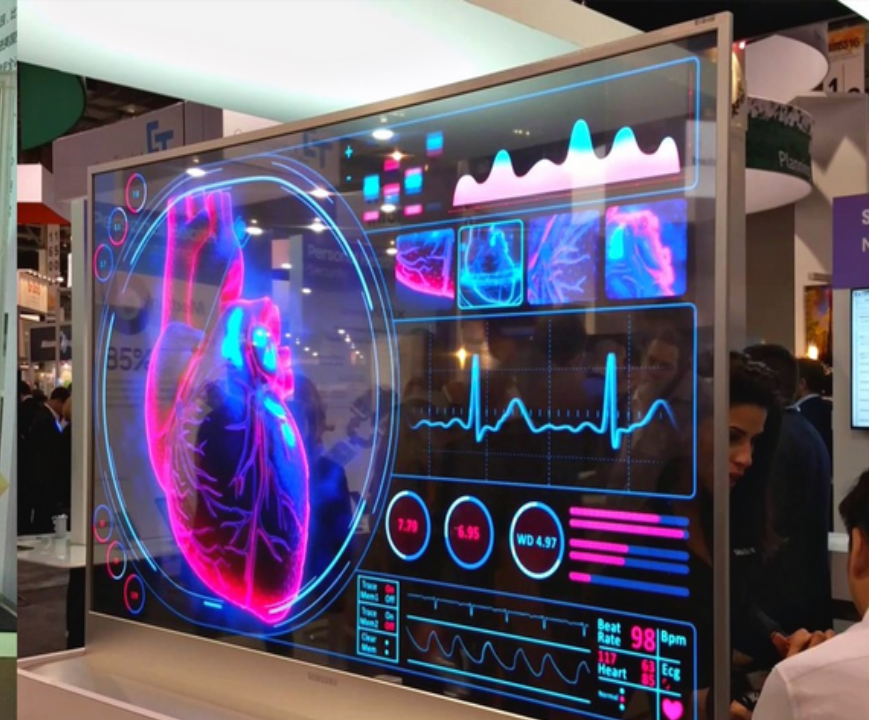
YOUR AUDIENCE IS OUR WORKSHOP

Our fundamental belief is that a distinct initial consumer experience yields better business results. Many companies have recently risen to preeminence specifically because of their ability to deploy a coherent and meticulously crafted user experience.

Our work with agencies and brands always leads to dramatic results, rooted in a methodical transformation of ever-changing consumer expectations of media.

We craft transformative visuals using unorthodox methods that simply stand out against the rest. Where other agencies may quantify differences between marketing disciplines, we see them unified in our goal of creating a resonant, lasting experience.





T R A N S P A R E N T O L E D



Boasting vivid and clear colors with high transparency, this technology provides valuable information about as well as visual enhancements to objects placed behind it, giving viewers an impressive, layered experience.

A slim, new technology developed by LG which makes it possible to achieve transparency without the need for any backlight enclosure. LG Transparent OLED signage illuminates spaces that once were hidden away behind the display, completely harmonizing with its surroundings.

Panels are designed semi-assembled, meaning you can install it in various ways to fit into existing structures and spaces. Displays can be also tiled together to make a immersive screen, enabling installation on large show-windows.



High Transparency

LG's OLED technology makes the Transparent OLED Signage have slimmer structure without backlight unit nor a liquid crystal layer, achieving high transparency of 38% much higher than conventional LCD transparent displays (10%*). While clearly showing objects behind the screen, it overlays the relevant information right before them.

Accurate and Vivid Colors

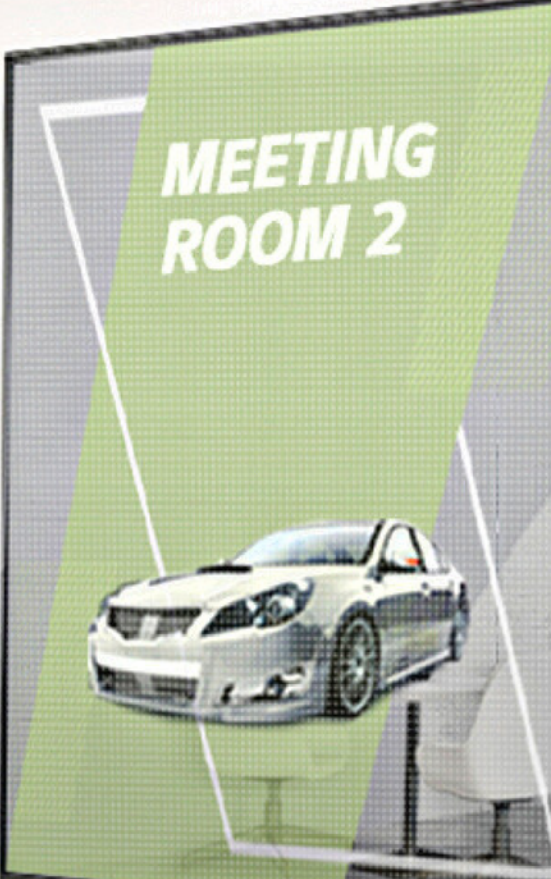
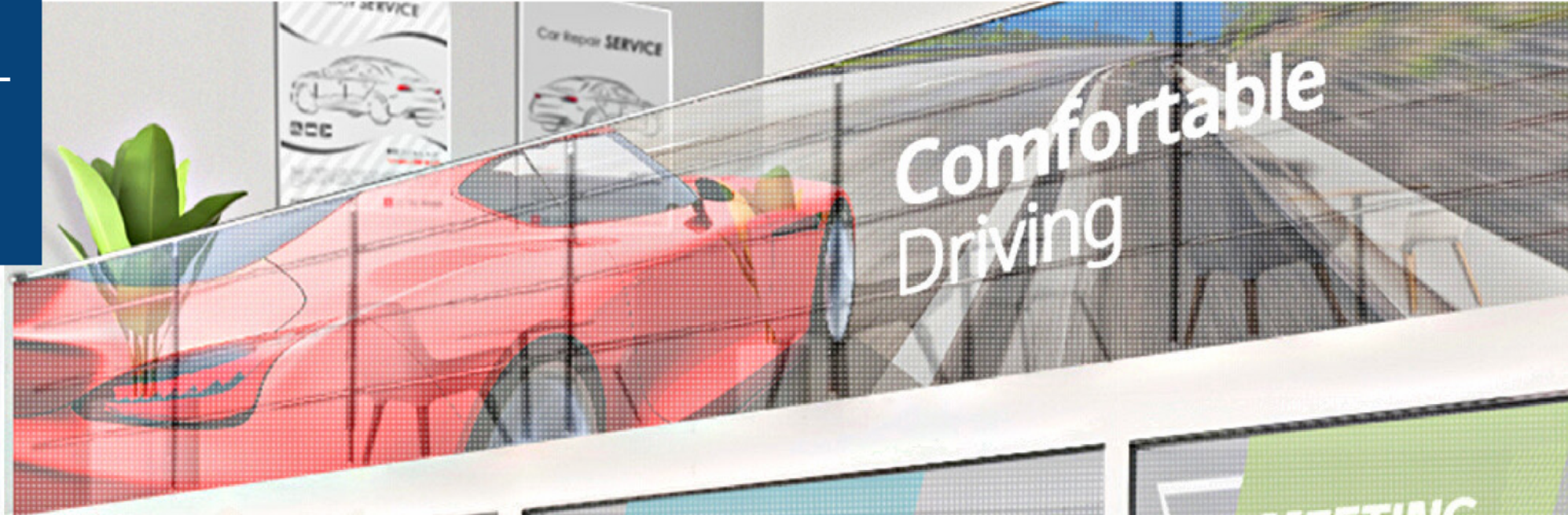
Featuring self-lighting pixels, the display maintains vivid colors and high contrast ratio even when the display becomes transparent. It brings content to life from wide viewing angles, and the content blends into its surroundings seamlessly and naturally.



A New Level of See-Through

LG Transparent OLED signage illuminates spaces that once were hidden away behind the display, completely harmonizing with its surroundings. Boasting vivid and clear colors with high transparency, this display provides visual enhancements to objects placed behind it, giving viewers an impressive "wow" factor.

TRANSPARENT
LED FILM



TRANSPARENT LED FILM



SUPERB TRANSPARENCY

The LG Transparent LED film reflects the object behind the product even after the product is attached and turned off. This offers a wide-open view while blending into existing interior design smoothly and delivers various information effectively by attracting the attention of passersby.

SELF-ADHESIVE FILM

The LG Transparent LED film is self-adhesive, so it can be easily attached to the surfaces of existing window glass without the need for any complicated construction.

OUTSTANDING EXPANDABILITY AND FLEXIBILITY

The size and layout of the film can be customized to fit into the installation area. It can be expanded by adding more films in a vertical or horizontal way, or cut in parallel with the bezel to meet size requirements.

FITTING IN WITH FLATS AND CURVES

The LG Transparent LED film supports curvatures up to 2,000R convex and concave for curved glass or window applications, and offers even surface by durable, transparent layers. This allows a wide range of venues to be redesigned with the LAT series as a landmark.

Independent research and development of driver IC, 16 bit gray level, high refresh rate. Independent core technology, any dead pixel does not affect other lamp beads. Easy maintenance, no need to return to the factory, simple training can be used for on-site maintenance.

Built-in design, integrated lamp driver, single point and single control, each LED lamp bead is a "power source". Make the control more precise and the heat dissipation more uniform. Micron-scale light-emitting source, with excellent performance such as transparency, high temperature resistance, moisture resistance, and low power consumption.

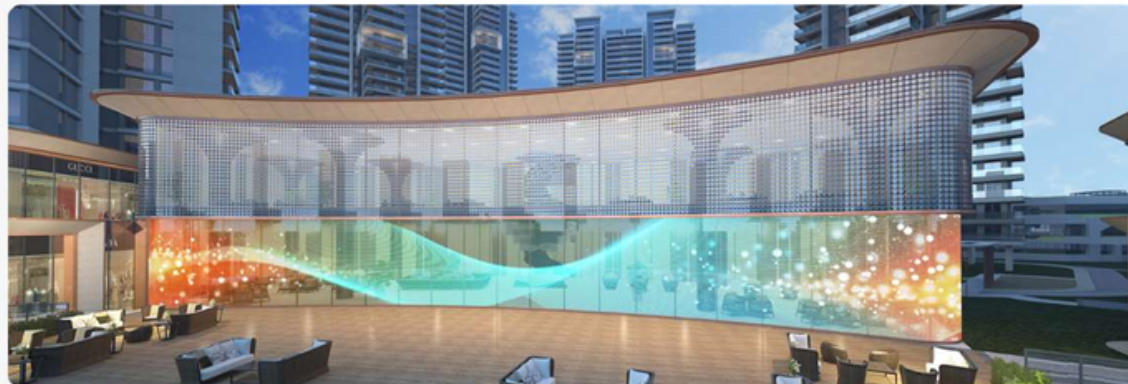
With independent intellectual property rights, dozens of patents have been authorized. The products meet the requirements of domestic and foreign industry standards, and have obtained various certifications such as CCC, CE, FCC, ROHS, and flame retardant testing.





Glass Facade Glue Installation

Ultra-clear and ultra-thin, high-transparency and high-temperature resistant high-end materials are used. The light board is perfectly designed to easily achieve a permeability of up to 80%. The overall mounting without a dragon skeleton, the screen body can be spliced left and right, up and down, and can achieve a display height or width of 2.4-3 meters. Commercial window, glass curtain wall and other indoor and outdoor scenes.



Widely used in creative display, comprehensive shopping malls, retail window, exhibition display and other scenes.



Application

Widely used in creative display, comprehensive shopping malls, retail window, exhibition display and other scenes.



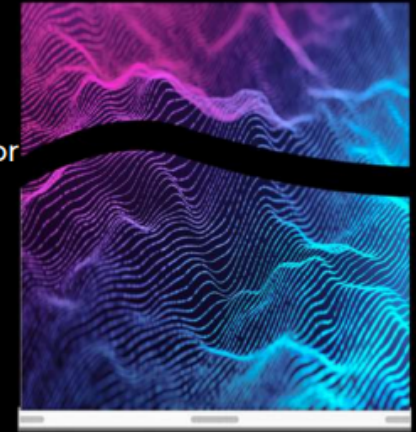
Transparent

Gamechanger in this industry without any keel in the cabinet. Truly fully transparent, front and back viewing transparency can reach more than 90%.



Flexible

Standard modules can be bent, cut, and used flexibly. The best partner for curved glass and special-shaped screen.



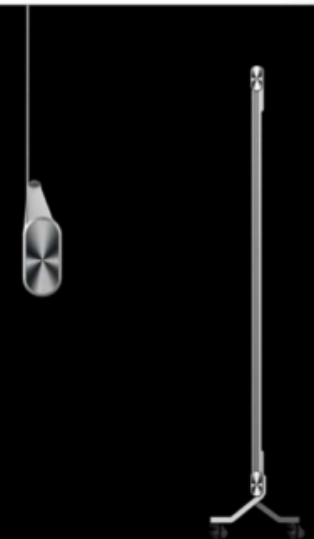
Light

Professional aesthetic design, thin and beautiful. Display body products. The weight is only 6KG/square meter.



Thin

Screen thickness is less than 2MM, which can be seamless surface mount. Mounted on transparent glass.

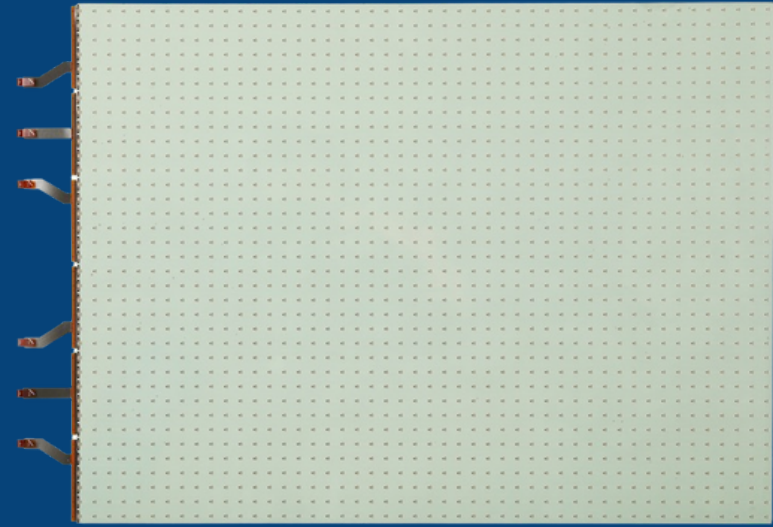


Model	MXW-P3	MXW-P6
Pixel Pitch (mm)	P3.91/P3.91	P6.25/P6.25
Visual Transparency	80%	90%
Pixel Density (dot/ m ²)	65536	25600
Cabinet Size (mm)	1000x250 \ 1200x250	1000x400 \ 1200x400 \ 1500x400
Cabinet Resolution (dot)	256x64 \ 300x64	160x64 \ 192x64 \ 240x64
Weight (Kg/ m ²)	6	5
Brightness	≥ 4000 (cd/ m ²)	≥ 3500 (cd/ m ²)
Package Form	Light driver integrated package	
Scan Mode	Single point single control, static drive	
LED Lifespan	≥ 100,000.00 hours	
Grayscale	65536	
Maximum Power Consumption (W/ m ²)	800	
Average Power Consumption (W/ m ²)	200	
LED Controller	Synchronous/Asynchronous	
Input Current	AC100~240V 50/60 Hz	
Module Working Current	DC 4.2V ± 0.2V	



TRANSPARENT OLED

LG Transparent OLED Touch Signage illuminates spaces that once were hidden away behind the display, completely harmonizing with its surroundings. It can respond according to viewers touch, which has great potential for various applications where customer interactions are required.



TRANSPARENT LED FILM

The LG Transparent LED film reflects the object behind the product even after the product is attached and turned off. This offers a wide-open view while blending into existing interior design smoothly and delivers various information effectively by attracting the attention of passersby.

Insight into the future and create miracles
OLED transparent screen

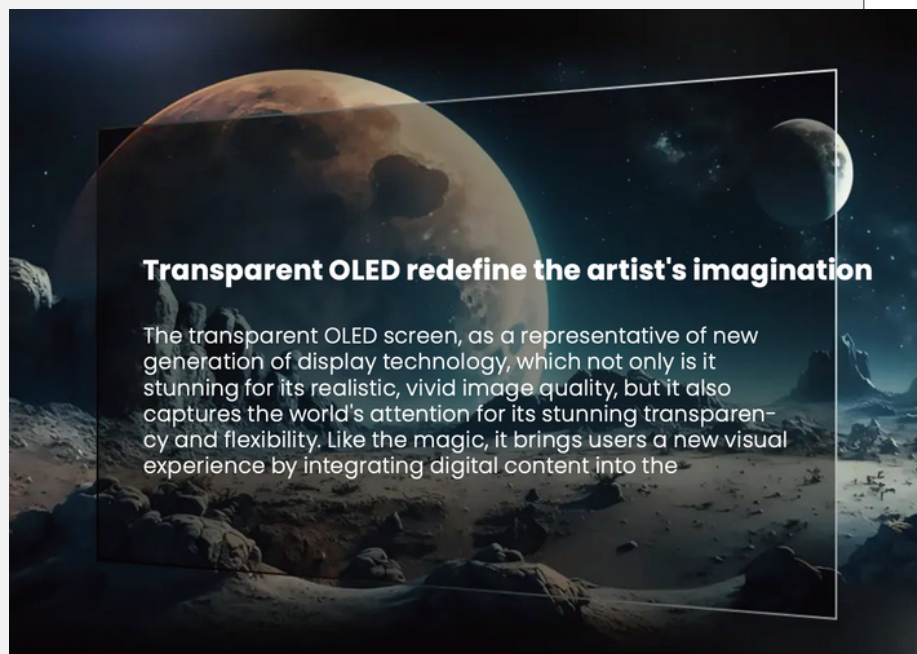




Gross Weight:83kg Carton Size:1380×370×1070 mm



Gross Weight:83kg Carton Size:1380×370×1070 mm



Transparent OLED redefine the artist's imagination

The transparent OLED screen, as a representative of new generation of display technology, which not only is it stunning for its realistic, vivid image quality, but it also captures the world's attention for its stunning transparency and flexibility. Like the magic, it brings users a new visual experience by integrating digital content into the

55 Inch Advertising Transparent OLED Display



01

Smart Film Series

Classic Self-adhesive Smart Film | Classic Laminated Smart Film
 | Different transparency and high temperature series
 | Self adhesive ultratransparency smart film with hard coat
 | Grey Smart Film | Auto Smart Film | PNLC Smart Film

Widely used in offices, hotels, banks, hospitals, shops, clubs, villas and other places.

02

Smart Glass Product Series

Widely used in offices, hotels, banks, hospitals, shops, clubs, villas and other places.



03

LED Glass Product Series

Widely used in glass curtain wall, brand chain store, commercial center, exhibition display, window, space decoration and other places.

04

0.2mm Ultrathin Transparency Display

Widely used in exhibitions, museums, supermarkets, science and technology museums, stage beauty, city lighting, cultural tourism night tours, etc.



Add high-quality advertising space to create business value

Double sides projection film display technology provides transparent display solutions for corporate exhibition halls, museums/technology exhibition halls, commercial retail stores and other scenarios. The cool technological effects enhance the strength of the exhibition hall, user experience and publicity effects, and bring value-added revenue.



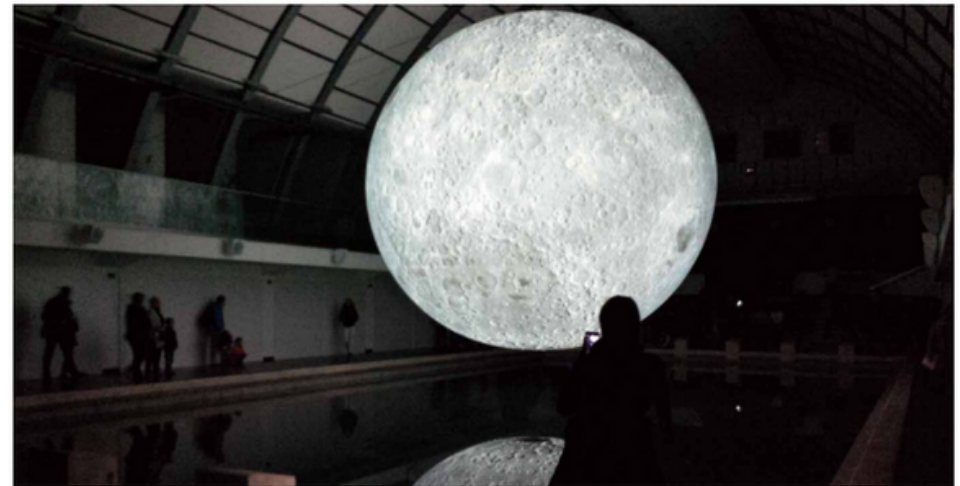
More dazzling stage dance

The photon transparent chip display technology, fully transparent and high-definition, brings a new immersive experience to the audience, which can unleash the imagination of dance beauty producers and give birth to a larger dance beauty night tour market.



Travel through time and let ancient artifacts tell their own stories

It solves the problem that cultural relics and exhibits can only be displayed statically and cannot display dynamic images at the same time. The new visual experience combined with the earphone explainer brings visitors a full range of audition experience and brings value-added revenue to the exhibition hall.



Projection 3D effect is more shocking

Presenting various immersive, sci-fi, and futuristic scenes in sci-fi blockbusters in a real environment. Transparent display of light and shadow images, phantom imaging, more realistic and more convenient, to achieve real light field display.



05

Smart Curtain Product Series

Blue Smart Curtain | White Smart Curtain

Widely used in offices, hotels, banks, hospitals, shops, clubs, villas and other places.

06

Silent Pod Product Series

Widely used in offices, hotels, banks, hospitals, shops, clubs and other places.



SHELF LED DISPLAY

D-TAG SERIES



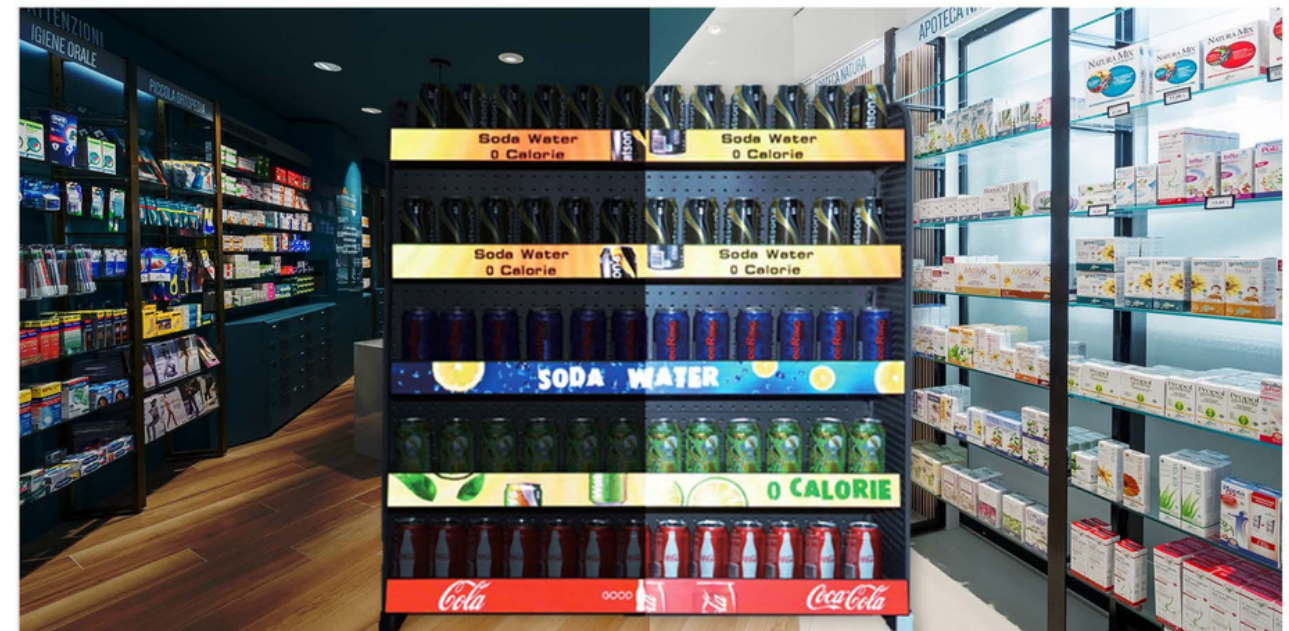
PRODUCT FEATURES

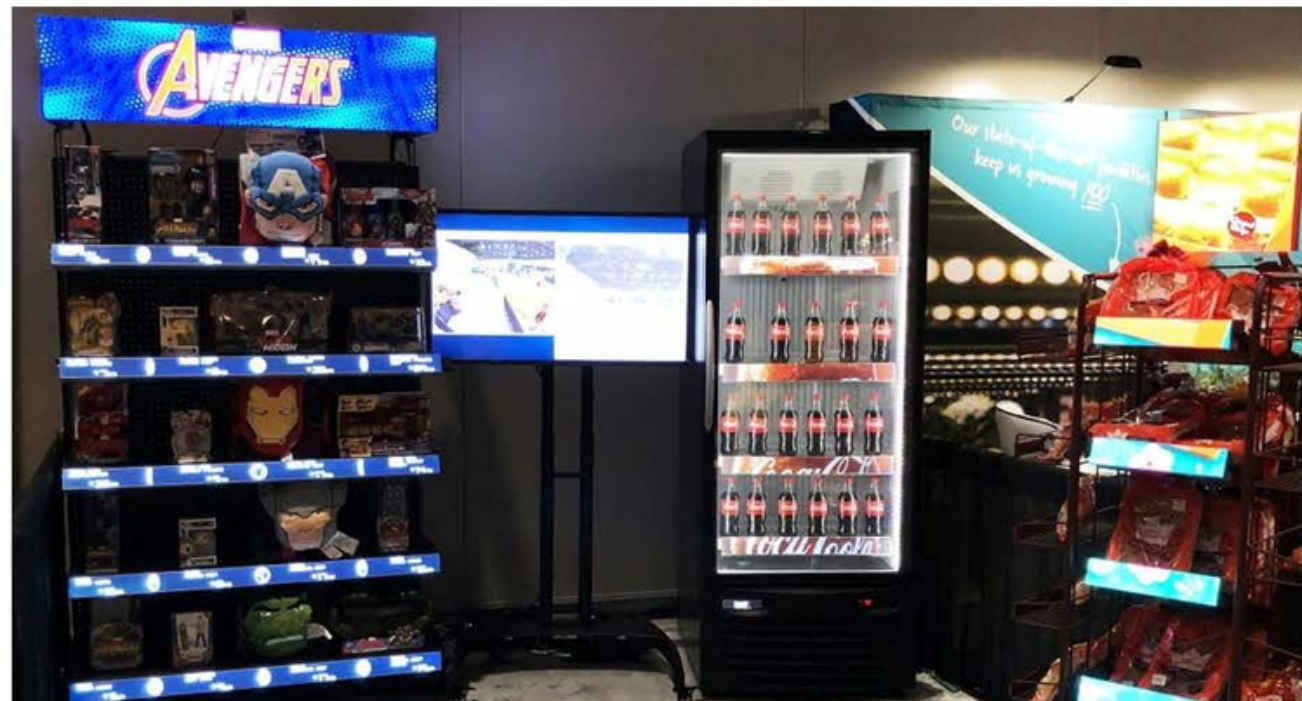
- ▶ Synchronous and asynchronous control: USB, Wi-Fi, 4G, network etc.
- ▶ Universal standardized profiles aluminum material, the size is 300x60mm, seamlessly assembled.
- ▶ High refresh rate and low gray, refresh rate $\geq 3840\text{HZ}$, grey scale 14Bit.
- ▶ 170 ° wide viewing angle
- ▶ IP65 waterproof, dustproof, anti-oxidation, anti-static, anti-impact
- ▶ Small size, light weight, compact and portable, plug and play
- ▶ The installation methods are diversified and widely used in various indoor places, give you a different visual experience



ALL-DAY APPLICATION

Super display performance for whole day and night.





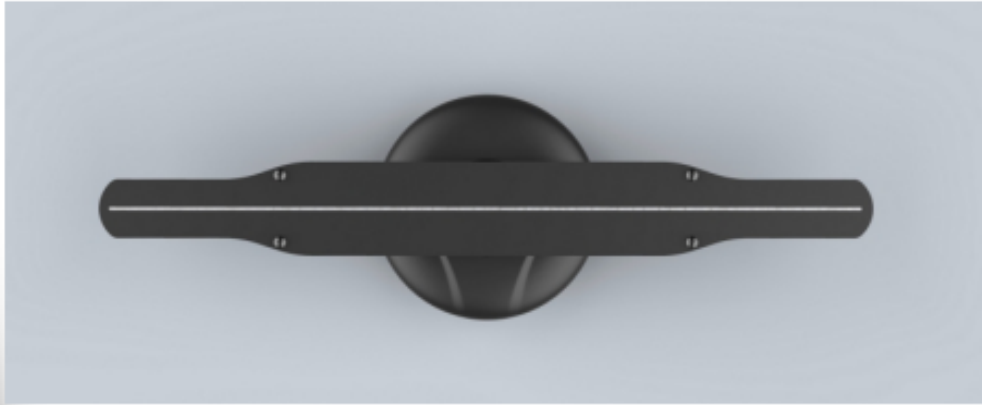
01

Holographic Smart Display --Web Series

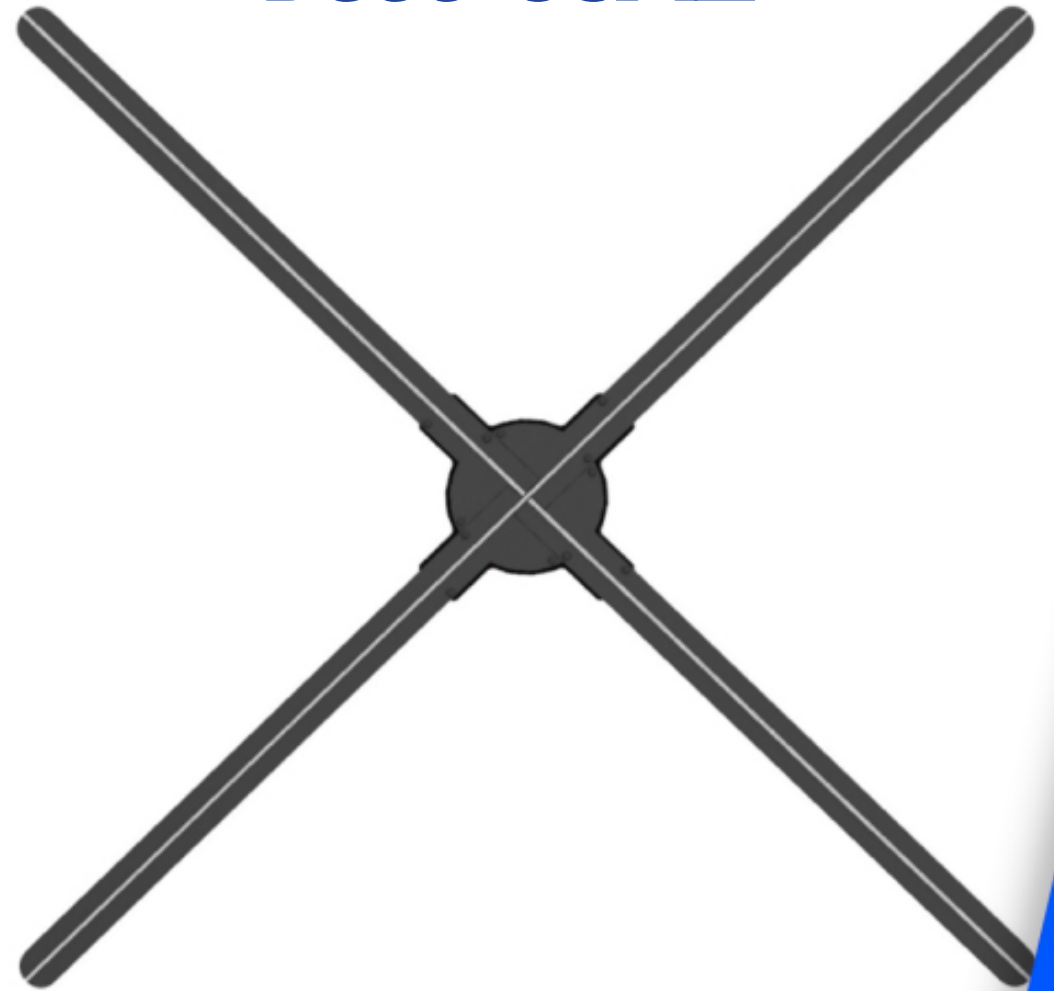
- Holographic smart screen is equipped with holographic OS system, with holographic content experience as the core holographic smart screen product; Holographic OS connects holographic smart screen products, cloud platform, holographic SDK, client software, holographic content platform and holographic content creation tools to provide customers with full chain holographic smart screen solution.
- Web series products include content services, device management services, account synchronization services, digital marketing services, command and message services, cross-platform terminal services.



Dsee-30S



Dsee-65X2



02

Holographic Smart Display --AI Series

- The holographic smart screen is a holographic smart screen product equipped with a holographic OS system and holographic content experience as the core; the holographic OS connects the holographic smart screen product, cloud platform, holographic SDK, client software, holographic content platform and holographic content creation tools to provide customers with full chain holographic smart screen solution.
- In addition to the Web series functions, the intelligent series products can support real-time rendering and customization of various AI capabilities



Dsee-78H



Dsee-130



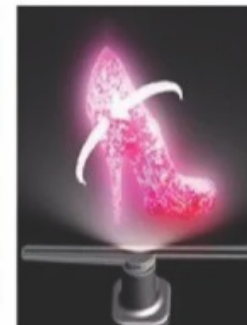
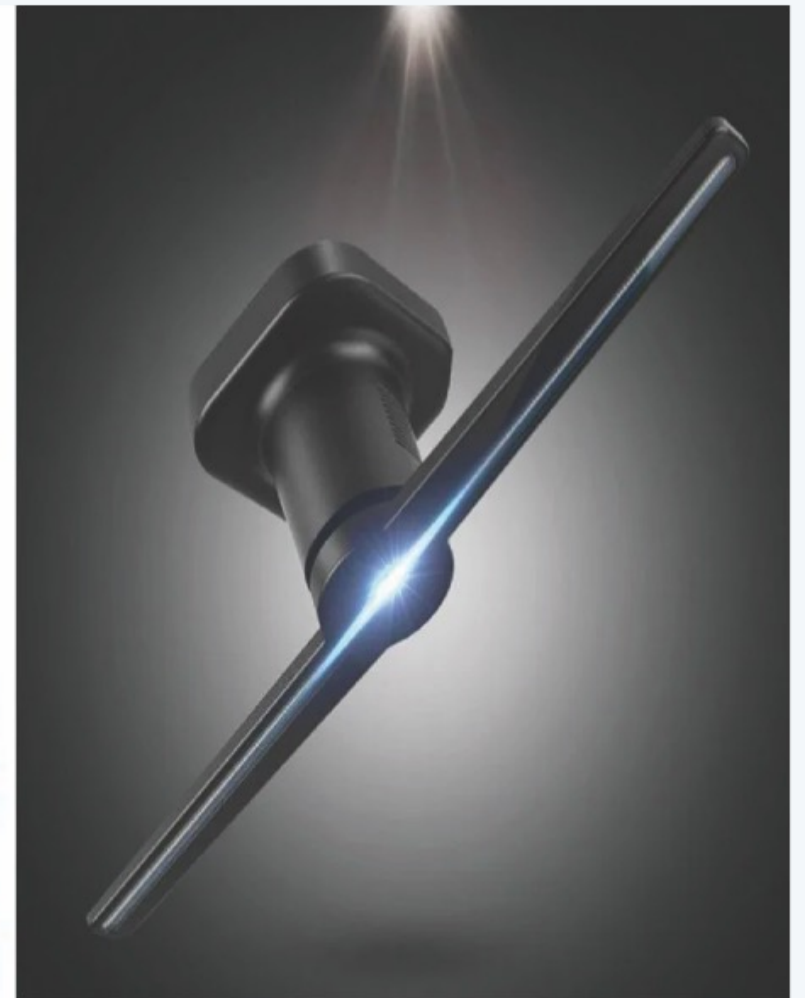
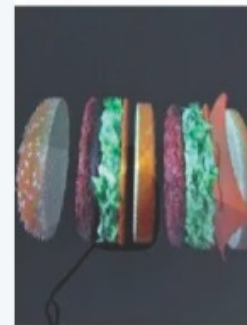
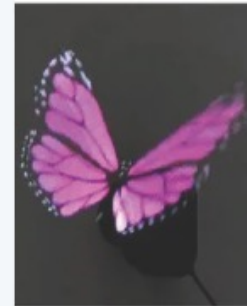
HOLOGRAPHIC SMART DISPLAY

HIGH RESOLUTION, HIGH BRIGHTNESS
HDMI INPUT IS SYNCHRONIZED WITH VIDEO SOURCE
REAL-TIME INTERACTION
WIDE RANGE OF ADAPTATION



Holographic Smart Display

Holographic smart screen is equipped with holographic OS system, with holographic content experience as the core holographic smart screen product; Holographic OS connects holographic smart screen products, cloud platform, holographic SDK, client software, holographic content platform and holographic content creation tools to provide customers with full chain holographic smart screen solution.



PC GAMING

PROFESSIONAL GRADE
HARDWARE WITH A DIFFERENCE



UNRIVALED EXPERTISE

Due to the significant rise in Esports and PC gaming over the last few years there has been an ever-growing demand for custom built PC's that allow gamers to perform at a professional level without any delays.

With gaming set to increase at an even faster pace than before, its imperative that gamers stay on top of the latest technologies.

Therefore, we have made it our goal in becoming one of the worlds leading custom PC building companies by 2023. Together, with the help of our outstanding team of professionals, we continue to craft, design and build award-winning, world-class computers.



EXETON PARAGON

Samsung 870 QVO 4TB

Asus Rog Strix850G

Lian-Li 1x 24 pin and 2x 8 pin StrimerRGB

Corsair XH303i Liquid Cooling Custom Loop

Corsair Vengeance DDR5 64GB 5200mhz



EXETON AGGRESSOR

Thermaltake Core P3 Glass

Asus Rog StrixCrosshair Hero X670E

AMD 7950X

MSI SuprimX 4080 or Asus Rog Strix4080 (+\$500 AED)

Corsair MP600 2TB

WORLD CLASS

We build custom PC's tailored for gaming with performance at the forefront and expertise at its core.

CUSTOM BUILT

With over a decade of experience in building the world's most advanced custom gaming computers we have the edge you need to be the best.

GROUND BREAKING

With a focus on every element, we ensure no stone is left unturned when it comes to squeezing out every ounce of power available.



IGNITER

We Fuel your performance and ignite your potential with Igniter. Our sleek and powerful PC is designed to light up your work and play with lightning-fast speeds, stunning graphics, and unbeatable reliability. Whether you're a gamer, creator, or multitasker, Igniter has the spark you need to take on any challenge and blaze your own trail in the digital world

Device name : Igniter

Processor: AMD Ryzen 9 7950X 16 - Core Processor 4.50 GHz

Installed RAM : 64.0 GB (63.1 GB usable)

Device ID: 341D51BA - 5C75 - 478B - B5E5 - AA5E533E9699

Product ID : 00331 - 10000 - 00001 - AA961

System type : 64 - bit operating system, x64 - based processor

Pen and touch : No pen or touch input is available for this display





EXETON VELOCITY MS 100 2-IN-1 AI WORKSTATION

The "Velocity MS100" is a dual-system chassis that offers powerful performance and efficient cooling. Both systems feature liquid cooling to maintain ultra-low temperatures, ensuring optimal operation.

The full tower chassis comes with tempered glass, offering a sleek and stylish design. The larger system, equipped with the X12SPA-TF motherboard and an Intel Xeon W-3375 processor boasting 38 cores, supports up to 4TB of RAM and up to 32TB of storage. It provides flexibility in choosing from multiple GPU options, including the A100 80GB, A40 48GB, or RTX A6000 48GB. With a robust 1600W power supply and XR7 water cooling, it's a high-performance solution. The smaller system, powered by the ROG STRIX Z690-I motherboard and an Intel Core i9-12900KS processor with 16 cores, offers 64GB of RAM and up to 16TB of storage.

√ General:

- Dual-System Chassis
- Liquid Cooling
- Full Tower with Tempered Glass

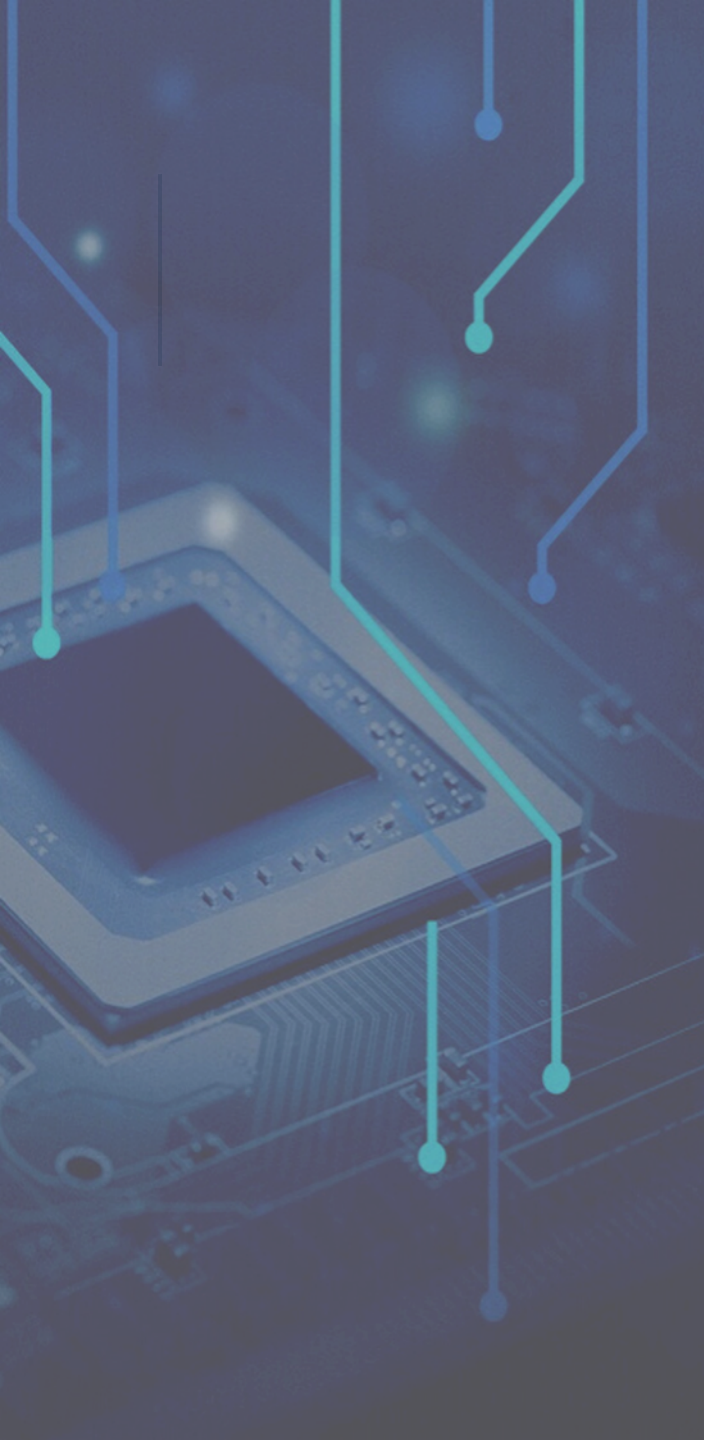
√ Big System:

- X12SPA-TF Mobo
- Intel Xeon W-3375 (38 cores)
- Up to 4TB RAM
- Up to 32TB Storage
- Multiple GPU Options
- 1600W PSU
- XR7 Water Cooling

√ Small System:

- ROG STRIX Z690-I Mobo
- Intel Core i9-12900KS (16 cores)
- 64GB RAM
- Up to 16TB Storage
- GPU Options
- 750W PSU
- Liquid CPU Cooling



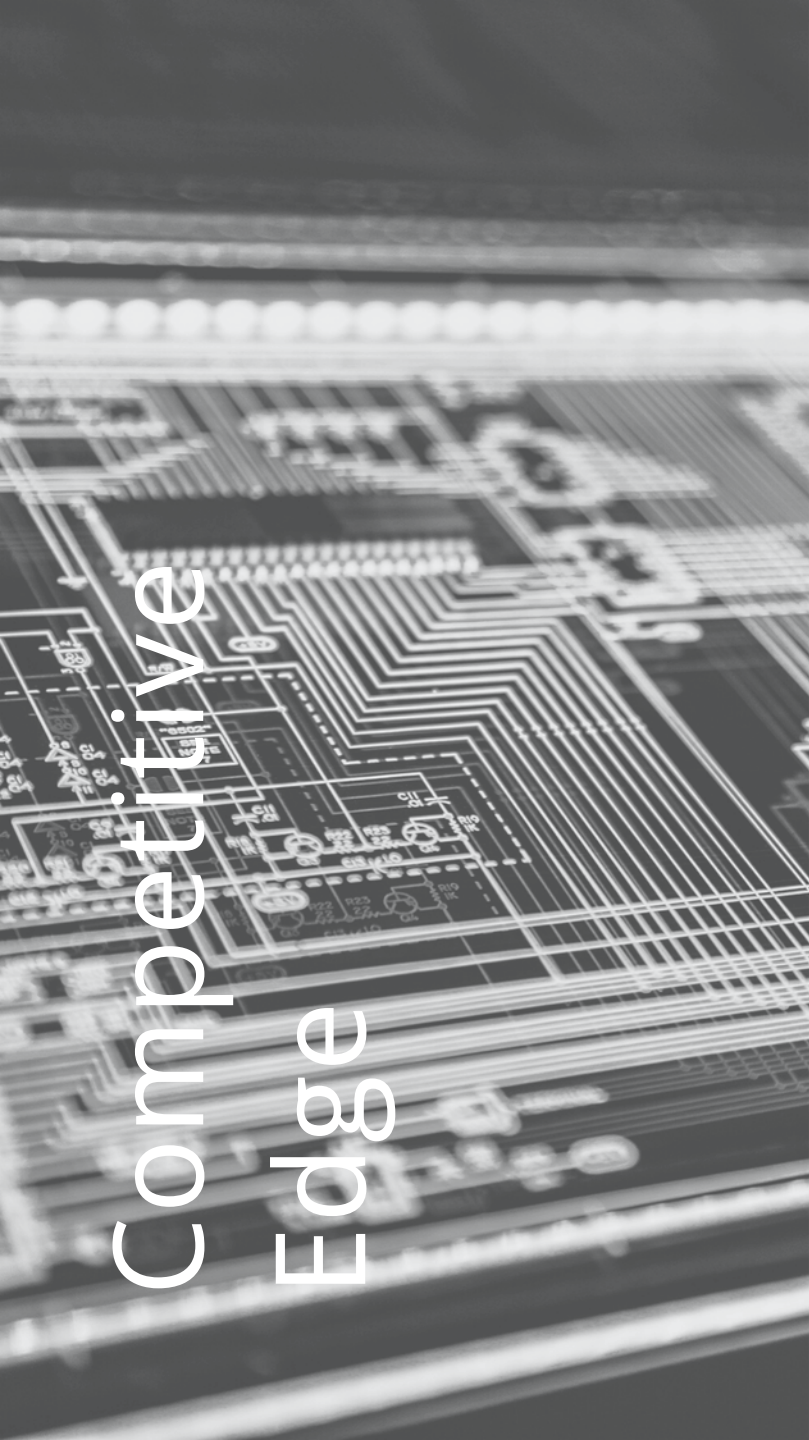


DOLLARS SPENT ON GAMING INDUSTRY 2022

200

Billion
Dollars
USD

PROJECTED TO INCREASE TO 268 BILLION (USD) BY 2025



Competitive
Edge

NEXT-GEN HARDWARE

Experience a new level of performance with an award-winning PC. Built with the latest technology and highest quality components.

Our dedicated team tests every gaming computer with a series of stress-tests and benchmarks that analyze the processor, memory, graphics cards, storage, and even the power supply so that you can play with confidence.



A.I COMPUTING

NEXT GENERATION
AUTOMATED SYSTEMS |

8th Generation Data Center GPU for the Age of Elastic Computing

4 NVIDIA A100 Tensor Core GPUs

Multi-Instance GPU (MIG)

Scalable 1-8 A100 GPUs

- 4 GPUs for AI training
- 2 GPUs for HPC or data analytics
- 2 GPUs in MIG mode, partitioned into 14 •
MIG instances, each one running inference

A Server-Class AI Appliance

- AMD Epyc 7742 enterprise-class server processor
- 512GB memory capacity standard with 8 DIMM slots

populated with 64GB DDR4-3200 ECC RDIMM memory

Display Adapter powered by NVIDIA Turing (GPU) technology

- 4 GB GDDR6 graphics memory
- 896 streaming multiprocessor (SMX) cores
- Supports four simultaneous displays
- up to 5K resolution with VESA DisplayPort 1.4 Mini-DP outputs.

Over x16 PCI Express Gen 4

Third-Generation NVLink

40 GB High-Bandwidth HBM2 Memory



Exeton Velocity

MS-100 2 in 1 Workstation

Tomorrow's Technology Today

Artificial intelligence (AI), once the subject of people's imaginations and main plot of science fiction movies for decades, is no longer a piece of fiction, but rather commonplace among people's daily lives whether they realize it or not.

AI refers to the ability of a computer or machine to mimic the competencies of the human mind, which often learns from previous experiences to understand and respond to language, decisions, and problems.

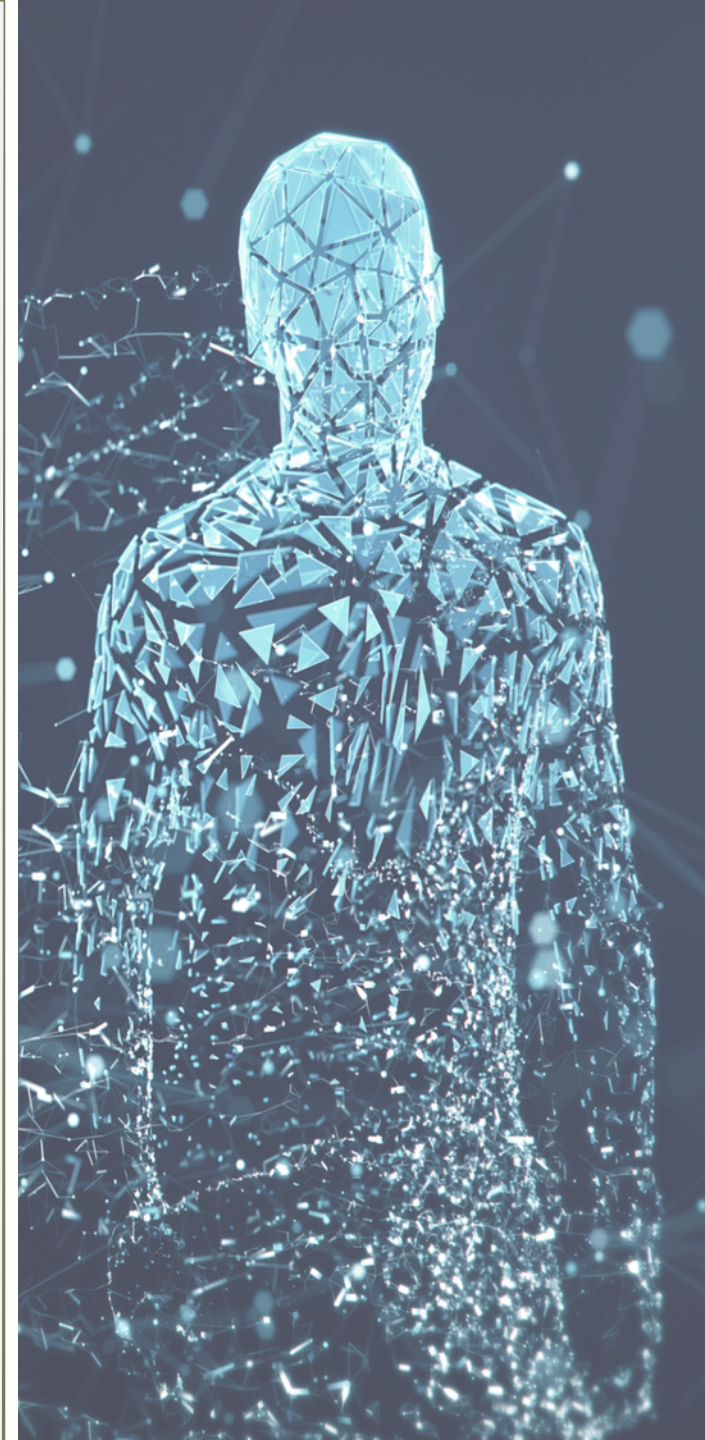
These AI capabilities, such as computer vision and conversational interfaces, have become embedded throughout various industries' standard business processes. The industries that have become prominent for AI adoption in organizations include high tech and telecommunications, financial services, and healthcare and pharmaceutical.



GLOBAL AI MARKET IN 2021

327

Billion
Dollars
USD



BREAKING BOUNDARIES

Our fully integrated AI platform enables a diverse portfolio of machine learning products and services across industries that work seamlessly together to create AI at scale.

No matter the task or workload, our integrated AI systems can help break boundaries.

We combine AI capabilities with world class technology to enable organizations to solve a broader set of challenges.



NO MOUNTAIN TOO STEEP

Our AI systems can tackle any task whether its data collection, language processing, unstructured data analysis, speech recognition and much more.

By building some of the best AI protocols in the industry we help businesses and partners streamline their workflow to optimize efficiencies across their entire sector.

Day and night our engineers are busy designing one-of-a-kind optimal network topologies to surpass industry standards.

You might be looking for traditional AI systems or be in the market for custom designed models to do something extremely special, whatever it is you need, you can rest assured that we have you covered.

MINING COLOCATION

BE THE CHANGE, BE A
CRYPTO PIONEER



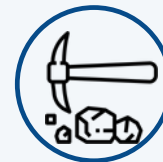
VIPERA



MINING, DESIGNED BY MINERS

HAND IT OVER TO THE EXPERTS

Digital currencies are strengthened as trust is built by decentralised systems run by individuals around the world. We help push the movement forward with the world's best mining equipment, first-class technical support and clear communication. We have our customers in mind when we make decisions as we press on with the development of the cryptocurrency industry and bring along our dedicated customers in the process.



OUR DISTINCT ADVANTAGE

Since 2016, our dedicated team of experts have been developing and evolving a successful 500 unit mining farm in Montreal, Canada. Our work over the past 5 years has given us a deep understanding of the steps necessary in order to achieve consistent profits in the crypto mining industry and we pride ourselves on our ability to overcome the challenges involved.

Our data center facilities are built from the ground-up and are extremely energy-efficient.

Through our infrastructure portfolio, we can offer you operating conditions that allow you to run clusters with unparalleled efficiency and reliability.

OPERATIONAL MINING GROWTH

2023+

Development

We are always building new crypto mining facilities to add to our current portfolio. Our facilities are always designed to operate at the highest standards as we combine our shared knowledge to implement truly groundbreaking opportunities.

Execution

No one does it better in the industry than our skilled technicians. With years of experience, our dedicated team will ensure the materials required to excel are implemented and maximum hashrates met.

Results

We maintain consistent communication with our customers, providing a much-needed window into operations so that you can sit back and watch as your investment and profits grow.

3E WISDOM
Portable Power Station
3E energy · wisdom choice

POWER STATIONS

LOW-CARBON SERVICE AND
ENERGY FUTURE





Portable Power Station S7

700w output, 384Wh LiFePo4 battery, PURE SINE WAVE AC outlets, 12V carport and 3* USB ports
FOUR WAYS TO RECHARGE: Solar panel, Wallsocket, Vehicle's 12V output, Electric Generator

Portable Power Station S15

1500w output, 960Wh LiFePo4 battery, PURE SINE WAVE AC outlets, 12V carport and 2* USB ports, 1 * type-c
FOUR WAYS TO RECHARGE: Solar panel, Wallsocket, Vehicle's 12V output, Electric Generator



Portable Power Station S25

2000w output, 1997Wh LiFePo4 battery, PURE SINE WAVE AC outlets, 12V carport and 4* USB ports, 2 * type-c
FOUR WAYS TO RECHARGE: Solar panel, Wall socket, Vehicle's 12V output, Electric Generator



GET IN TOUCH

Be the change. Be a crypto pioneer.



CANADA

3737 BOUL CRÉMAZIE E,
MONTRÉAL, QUEBEC
H1Z 2K4



UNITED ARAB EMIRATES
11B, BUILDING 06
HAPPINESS
STREET CITY
WALK, DUBAI



SINGAPORE

600 Sin Ming Ave,
CityCab Building Level
2, Singapore 575733



UNITED STATES

8500 N. MoPac
Exwy., Suite 812,
Austin, Texas 78759



+1 514 594 8552
JAMES CAMPAGNA



JAMES@VIPERATECH.COM
JAMES CAMPAGNA



VIPERATECH.COM
ONLINE